



CDHF11 Polyclonal Antibody

Catalog No	YP-Ab-16947
Isotype	IgG
Reactivity	Human;Rat;Mouse;
Applications	IHC;IF;ELISA
Gene Name	CELSR3
Protein Name	Cadherin EGF LAG seven-pass G-type receptor 3
Immunogen	The antiserum was produced against synthesized peptide derived from human CELSR3. AA range:91-140
Specificity	CDHF11 Polyclonal Antibody detects endogenous levels of CDHF11 protein.
Formulation	Liquid in PBS containing 50% glycerol, 0.5% BSA and 0.02% sodium azide.
Source	Polyclonal, Rabbit,IgG
Purification	The antibody was affinity-purified from rabbit antiserum by affinity-chromatography using epitope-specific immunogen.
Dilution	Immunohistochemistry: 1/100 - 1/300. Immunofluorescence: 1/200 - 1/1000. ELISA: 1/20000. Not yet tested in other applications.
Concentration	1 mg/ml
Purity	≥90%
Storage Stability	-20°C/1 year
Synonyms	CELSR3; CDHF11; EGFL1; FMI1; KIAA0812; MEGF2; Cadherin EGF LAG seven-pass G-type receptor 3; Cadherin family member 11; Epidermal growth factor-like protein 1; EGF-like protein 1; Flamingo homolog 1; hFmi1; Multiple epidermal growth factor-
Observed Band	
Cell Pathway	Cell membrane; Multi-pass membrane protein.
Tissue Specificity	Brain,Cord blood,Duodenum,Epithelium,Kidney,Uterus,
Function	function:Does not seem to be involved in anion transport.,function:Receptor that may have an important role in cell/cell signaling during nervous system formation.,similarity:Belongs to the G-protein coupled receptor 2 family. LN-TM7 subfamily.,similarity:Belongs to the SLC26A/Sulp transporter (TC 2.A.53) family.,similarity:Contains 1 GPS domain.,similarity:Contains 1 laminin EGF-like domain.,similarity:Contains 1 STAS domain.,similarity:Contains 2 laminin G-like domains.,similarity:Contains 8 EGF-like domains.,similarity:Contains 9 cadherin domains.,tissue specificity:Ubiquitous. Highest levels in kidney and pancreas. Lower expression in heart, skeletal muscle, liver and placenta. Also found in lung and brain.,



Background

This gene belongs to the flamingo subfamily, which is included in the cadherin superfamily. The flamingo cadherins consist of nonclassic-type cadherins that do not interact with catenins. They are plasma membrane proteins containing seven epidermal growth factor-like repeats, nine cadherin domains and two laminin A G-type repeats in their ectodomain. They also have seven transmembrane domains, a characteristic feature of their subfamily. The encoded protein may be involved in the regulation of contact-dependent neurite growth and may play a role in tumor formation. [provided by RefSeq, Jun 2013],

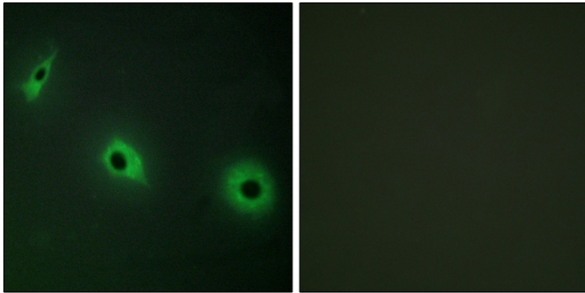
matters needing attention

Avoid repeated freezing and thawing!

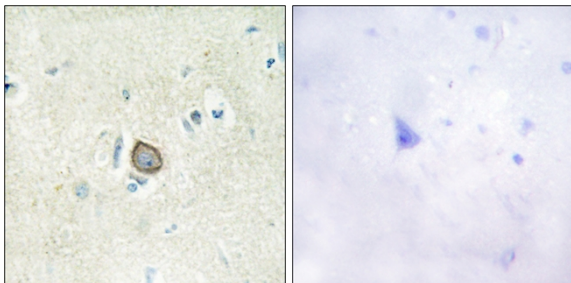
Usage suggestions

This product can be used in immunological reaction related experiments. For more information, please consult technical personnel.

Products Images



Immunofluorescence analysis of HepG2 cells, using CELSR3 Antibody. The picture on the right is blocked with the synthesized peptide.



Immunohistochemistry analysis of paraffin-embedded human brain tissue, using CELSR3 Antibody. The picture on the right is blocked with the synthesized peptide.